

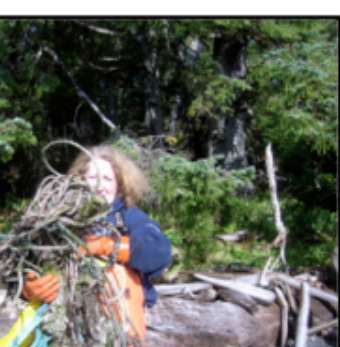
# Marine Debris Removal



Island Charters  
Craig Alaska

marine debris cleanups throughout Alaska since 2003. During the period from 2003-2011, MCAF sponsored 83 projects that removed more than 2. million pounds of debris from the Alaska coastline.

[www.mcafoundation.org](http://www.mcafoundation.org)



Labor hours: 2,471 Volunteer hours: 370  
Pounds: 58,408  
Yards of beach: 70,350 (2012 not included)

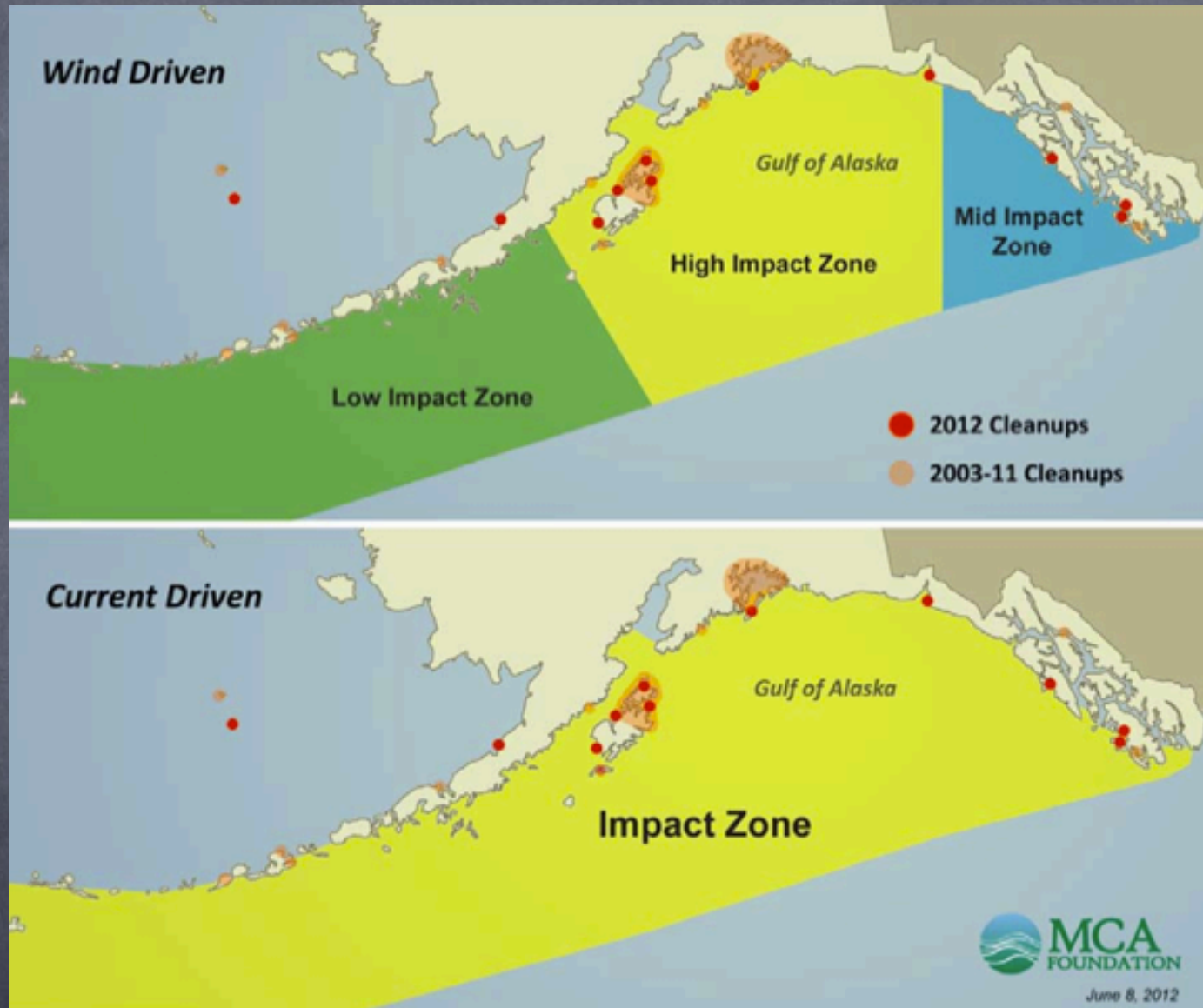




# Tsunami debris



# Tsunami Debris Impact



Wind driven = high floating, lightweight debris, high sail area, such as a piece of styrofoam or buoy

# PHOSTOXIN PELLETS -POISON-

Information from the National Oceanic and Atmospheric Administration indicates the canisters likely came from cargo ships exporting bulk grain to Pacific Rim nations. These ships load grain at terminals on the Columbia River as well as Grays Harbor, Puget Sound and British Columbia.

The Washington departments of Agriculture and Ecology (Ecology) are working closely with fumigation companies, the grain export and shipping industry, shipping agents and port officials to keep these unwelcome 10-inch metal canisters off Washington beaches.

Some canisters still contained residual amounts of aluminum phosphide. When the chemical is exposed to air it becomes a toxic gas that poses a human health risk.



# Educating The Kids



[www.mcafoundation.org](http://www.mcafoundation.org)

Kathy Peavey

POB 442

Craig, AK 99921

907-826-3856

[peavey@aptalaska.net](mailto:peavey@aptalaska.net)